

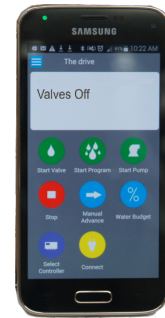
Remote Irrigation Control

Operate your Heron irrigation controller from your PC or from any device that can connect to the internet.

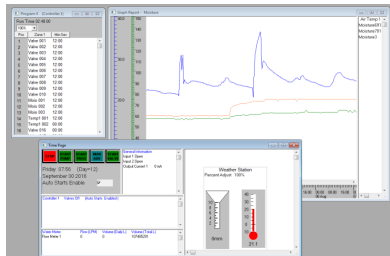
Heron Web App

With the Heron Web App you can control your irrigation controller through a web browser. The Heron Web App allows you to :

- See the real time status of your irrigation valves as they run.
- Start and stop valves, irrigation program and pumps.
- Change automatic starts and programs.
- Monitor flow EC and pH?
- Change water budget settings.



Ground Control PC Software



With Heron's Ground Control software all the functions on the irrigation controller can be operated from your PC.

- Construct and customize irrigation programs.
- View irrigation events and errors reports.
- View graphs and reports of sensor readings.
- Display real-time status of sensor readings and inputs.



Ground Control also includes a comprehensive graphical drawing facility. Realistic pictures of your irrigation area can be easily drawn and the irrigation system operated from the graphical image. Simply click on an area in the image to change the irrigation time, start the irrigation or to obtain historical data.

Internet devices communicate to Heron controllers through the Heron server.



The Heron server logs data from your controller and gives you the option to receive emails on volume usage and any alerts.

Local LAN Interface



If your irrigation controller is situated close to a local area network then the Heron local LAN interface card can be used to provide an optically isolated ethernet LAN connection. A LAN ethernet cable (RJ45 cable) plugs into the local LAN interface card fitted inside the lid of the controller.

Remote LAN Interface and Line Driver

Order Code [ETHINT-B](#)



The remote LAN interface and line driver enables controllers up to 500 meters away from a local area network to be connected to the internet. The remote LAN interface is connected to the internet with an RJ45 Ethernet cable.

- 4 core cable connection up to 500m
- Optical isolation with 20mm air gap for high surge immunity
- 230/110V power required at LAN connection end.

Order Code [ETHDRV-B](#)

GSM Mobile Module



If a cable connection is not possible then the Heron GSM mobile module provides internet connection via the GSM phone network.

- Data SIM card required 50-100 M bytes/month
- Good G3 reception required
- Can be fitted internally in the controller or in an external box.
- External antenna available to mount antenna on a mast

Order Code [HMMEXT-C](#) and outdoor antenna [ATTEXT-A](#)

Radio to LAN Interface



If a cable connection is not possible to the Heron Controller then the Heron radio to LAN Interface provides a private radio link to an ethernet LAN port. The maximum distance of the radio link is 2 km to 7 km depending on the power of the radio module. The radio to LAN interface is connected to the internet with an RJ45 ethernet cable. As the radios use European license free bands there are no revenue charges with this solution.

The radio LAN interface is supplied with two external antennas for mast mounting at each end.

Order Code: (Higher Power) [RLANHP-A](#)

Unit G15, Rudford industrial Estate
Arundel, West Sussex, BN18 0BD
England

www.heron-electric.com

sales@heron-electric.com

Tel: +44 (0)1903 724343

Mottech Parkland Pty Ltd
Unit 14, 14 Ashtan Place, Banyo 4014
T. +61 7 3267 3522 | M. +61 424 557 117
info@parkland.com.au | www.parkland.com.au

